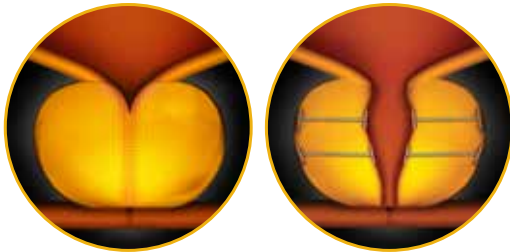


What is UroLift?

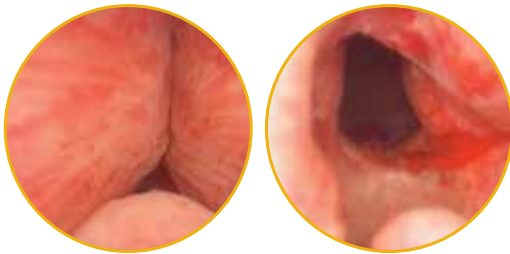
The UroLift[®] System is designed to treat lower urinary tract symptoms (LUTS) due to benign prostatic hyperplasia (BPH). It opens the urethra directly by retracting the obstructing prostatic lobes without cutting, heating or removing prostate tissue.



Pre-Procedure

Post-Procedure

Clinical Highlights



(Images courtesy of Dr. Peter Chin, Wollongong, NSW, Australia)

- Endoscopic results can be immediately confirmed post-procedure
- Patients may experience symptom relief as early as 2 weeks post-procedure¹
- There have been no reports of new onset of sexual dysfunction, retrograde ejaculation or permanent erectile dysfunction²
- UroLift System treatment does not preclude the option for future UroLift, TURP, or laser procedures should one be indicated

Most common adverse events reported include hematuria, dysuria, micturition urgency, pelvic pain, and urge incontinence. Most symptoms were mild to moderate in severity and resolved within two to four weeks after the procedure.

¹ Data on file at NeoTract, Inc.
² Roehrborn, J Urology 2013 LIFT Study

UroLift System: UL400

UroLift[®] Delivery Device



UroLift[®] Permanent Implant

The UroLift Delivery Device is inserted transurethrally through a rigid sheath under cystoscopic visualization in order to reach the targeted area of obstruction.

The UroLift Implant is deployed through a needle that comes out of the delivery device to retract the obstructing lobes.

Each UroLift Delivery Device contains one UroLift Implant. Typically, 4-5 UroLift Implants are placed into the prostate.

